

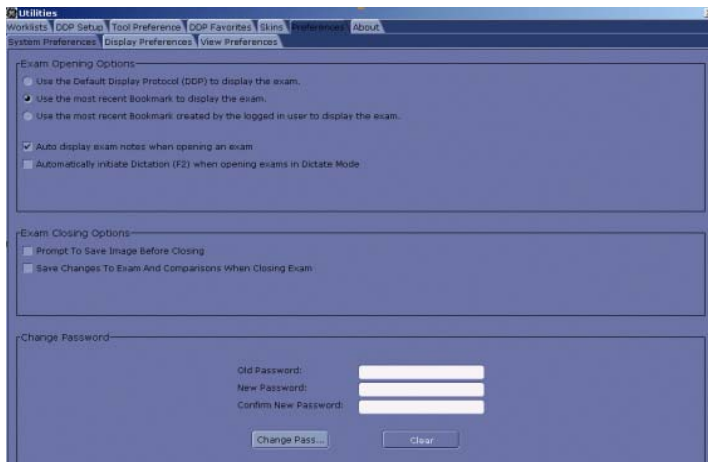
Centricity RA1000 Workstation

Quick Reference Guide for Centricity Utilities Menu #2

Click on Utilities icon at the bottom of any monitor to open Utilities menu.

System Preferences

- Click **System Preferences** tab
- Select **“Use the Default Display Protocol (DDP) to display exam”** to allow user DDPs to be applied as default when opening an exam.
- Other options in this tab depend on facility specific workflow and policies for using exam note functionality, interface with dictation system and saving options. Contact System Administrator for guidance.
- Change Password (Optional)



Display Preferences

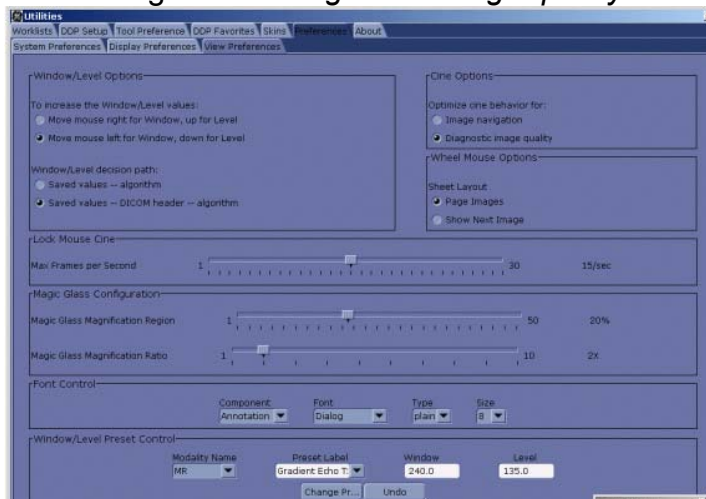
- Click **Display Preferences** tab
- Select **Image Number** verses **Table Location** to choose image display order.
- Select **Display Options** standard configurations:
 - Force DDP Tool Parameters by default**
 - Show Cobb angle calculation by default**
 - Enable synch-ing stacks feature**
 - Hide Cross-Reference lines in active region (Stack) and (Sheet)**

- **Image Grouping**-Grouping depends on how user wishes to view series and what modality DICOM information is being sent to Centricity.



View Preferences

- Click **View Preferences** tab
- Adjustments in this menu can be made to configure the system to user defined preferences. There are no standard elections, however it is recommended that radiologists use *diagnostic image quality* for cine option.



Trouble

- Call your facility's Help Desk or contact your System Administrator.